

## Fusion Workflow Editor for Sage X3

Customise layout and perform actions within email

Fusion Workflow Editor allows you to customise the layout, information, functionality, images and colours used within your company's workflow emails, enabling productivity, ease and convenience.

### Consistent branding and formatting

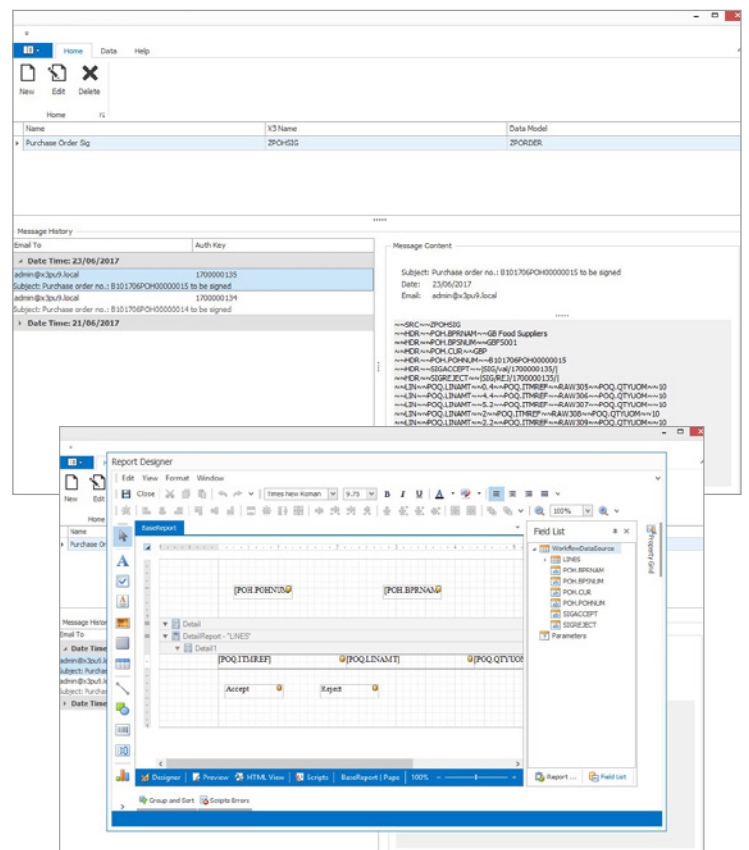
Ensure that your emails are delivered on-brand with Fusion Workflow Editor. This Sage X3 add-on allows you to customise your workflow emails with your own layout preferences, company logo and brand colours, so you can reinforce your brand and help to reassure recipients of the legitimacy of emails sent from your company.

### In-email productivity

Fusion Workflow Editor helps you to give the recipients of workflow emails all of the rich data they need, directly from within the email. No separate access to Sage X3 is required to find additional or further details about, for example, a purchase order; meaning this can be much more quickly accepted or rejected from the email.

### Convenient and secure offline access

Internet access isn't required to accept or reject authorisation requests from workflow emails created with Fusion Workflow Editor. This allows for quick, easy and secure interactions without having to login to Sage.



**Fusion Workflow Editor is part of the Datel Fusion suite of products, designed to integrate with and work alongside Sage solutions. The Fusion suite enhances and extends the functionality provided by the core Sage applications.**