

**datel**

expanding the  
world of sage

## ▶ **Setting up Bank Accounts**

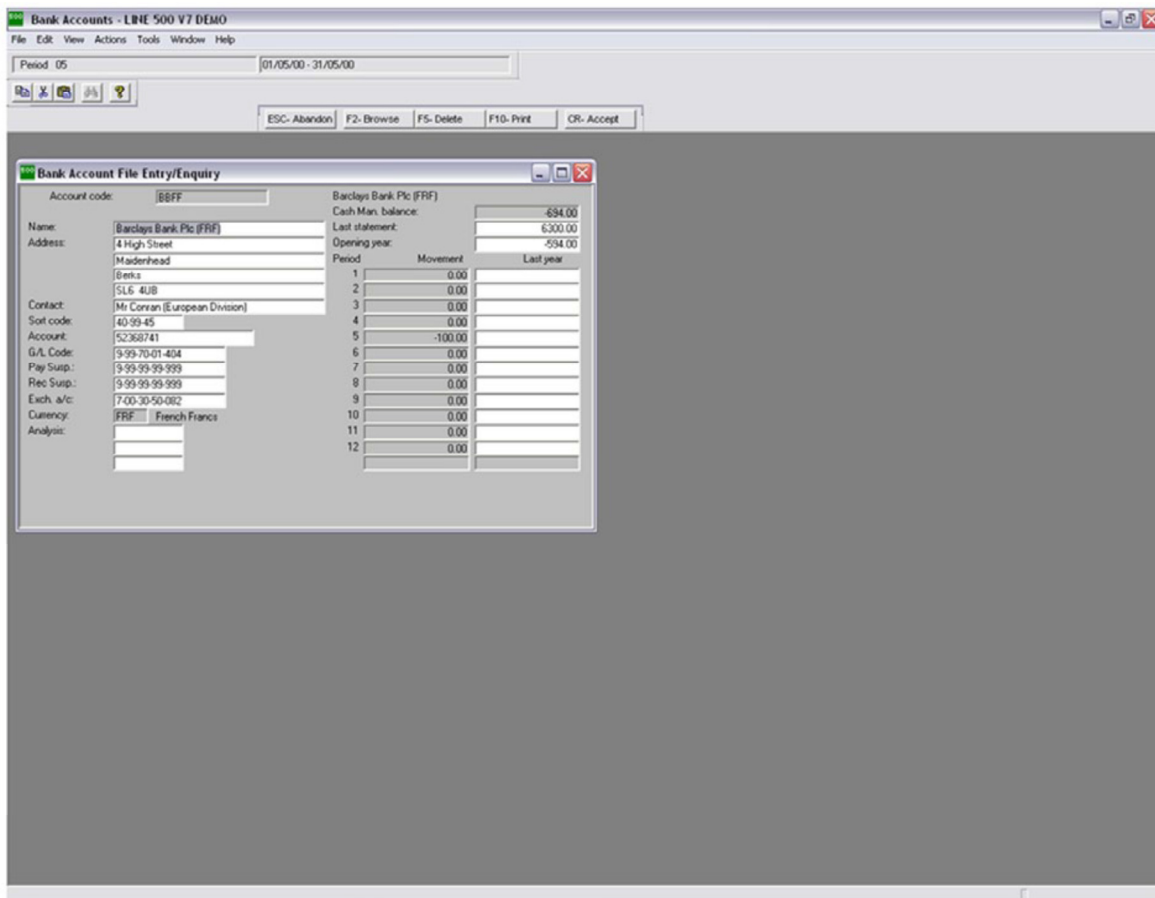
Sage Line 500 – Help Sheet



You will first need to create the bank accounts in each of the modules that you use e.g. Cash Book, Accounts Receivable, Accounts Payable. A bank account must be set up through the option Bank Accounts before any transactions or balances can be entered for that account.

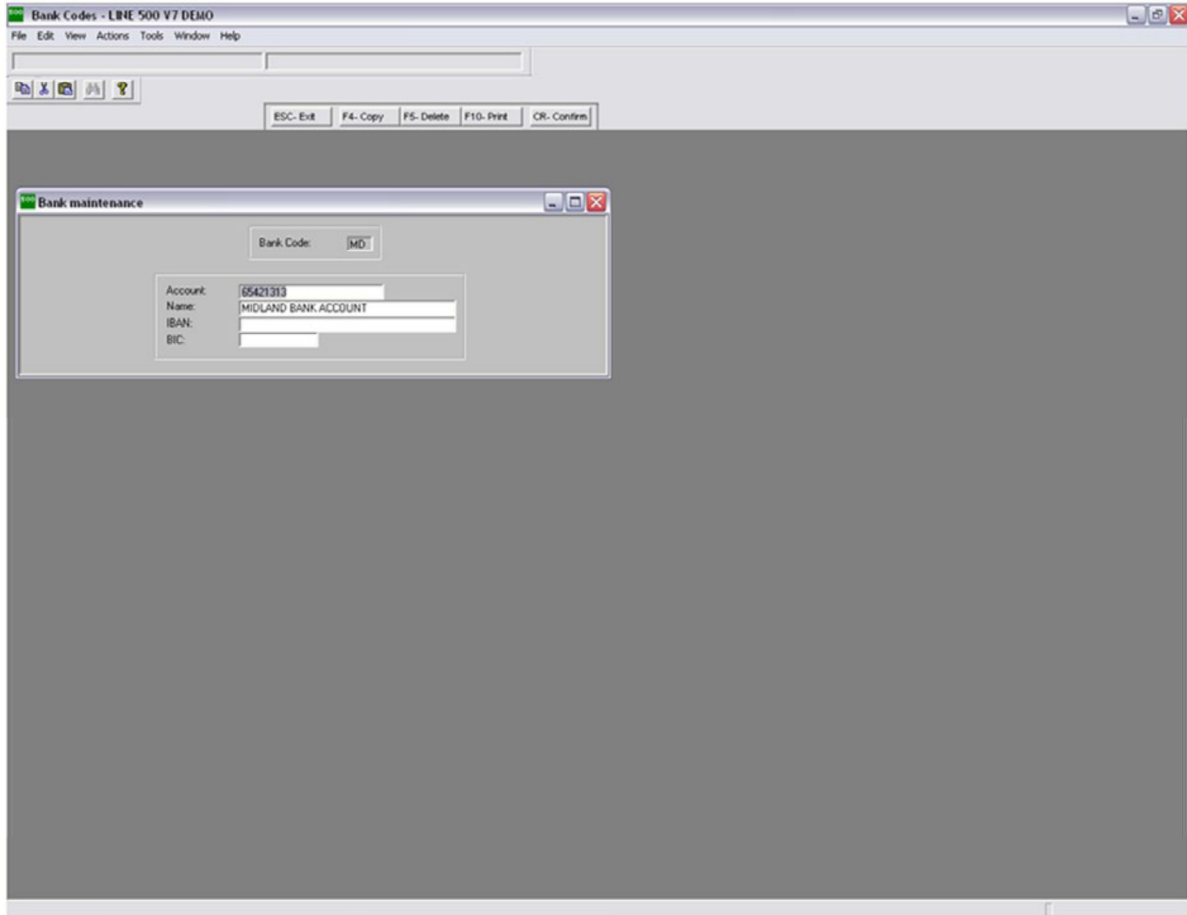
### Cash Book

To enter new bank accounts go to Create Amend Master Files>Bank Accounts:



**Accounts Receivable/Accounts Payable**

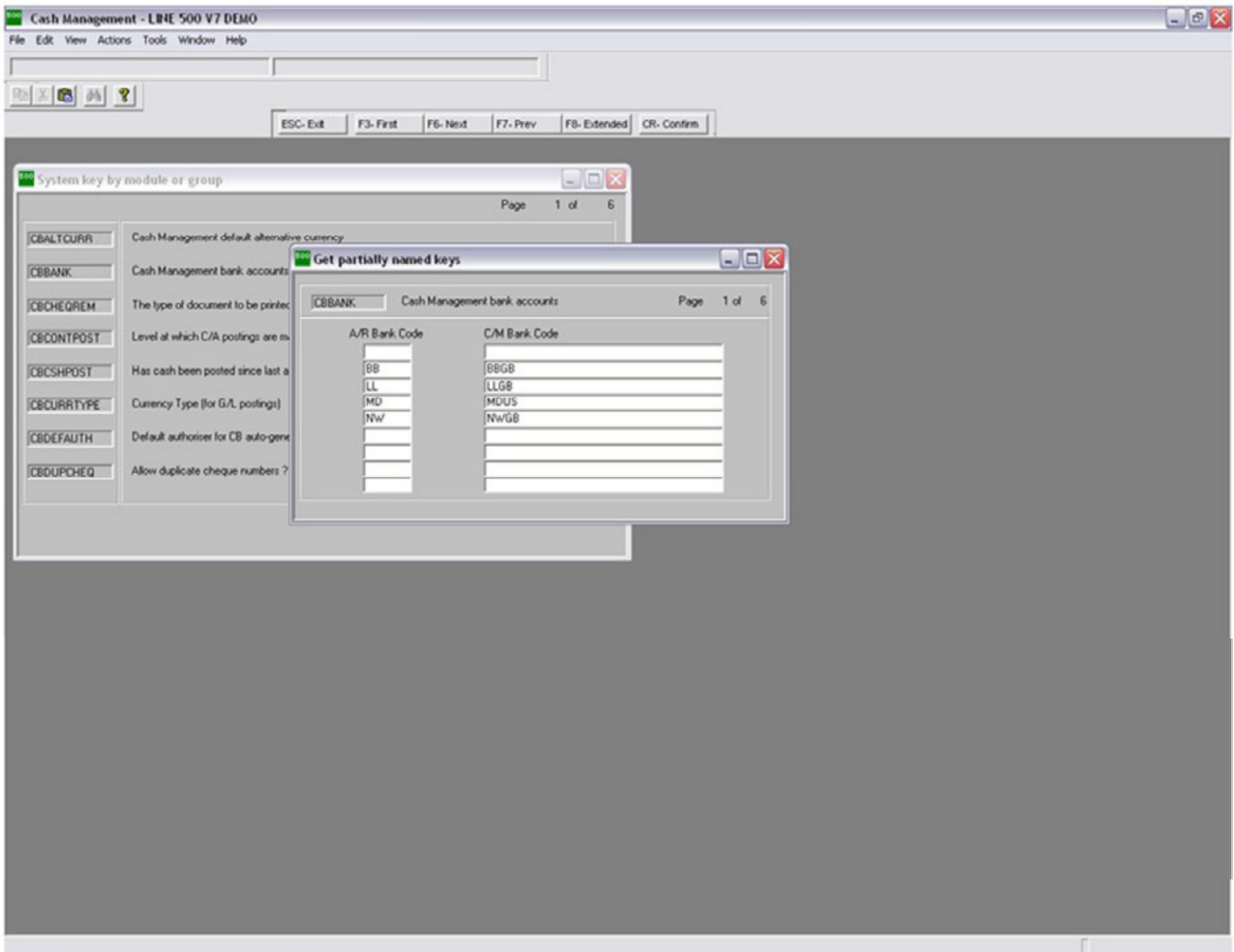
To enter new bank accounts in these modules go to Create Amend Master Files>Bank Codes:



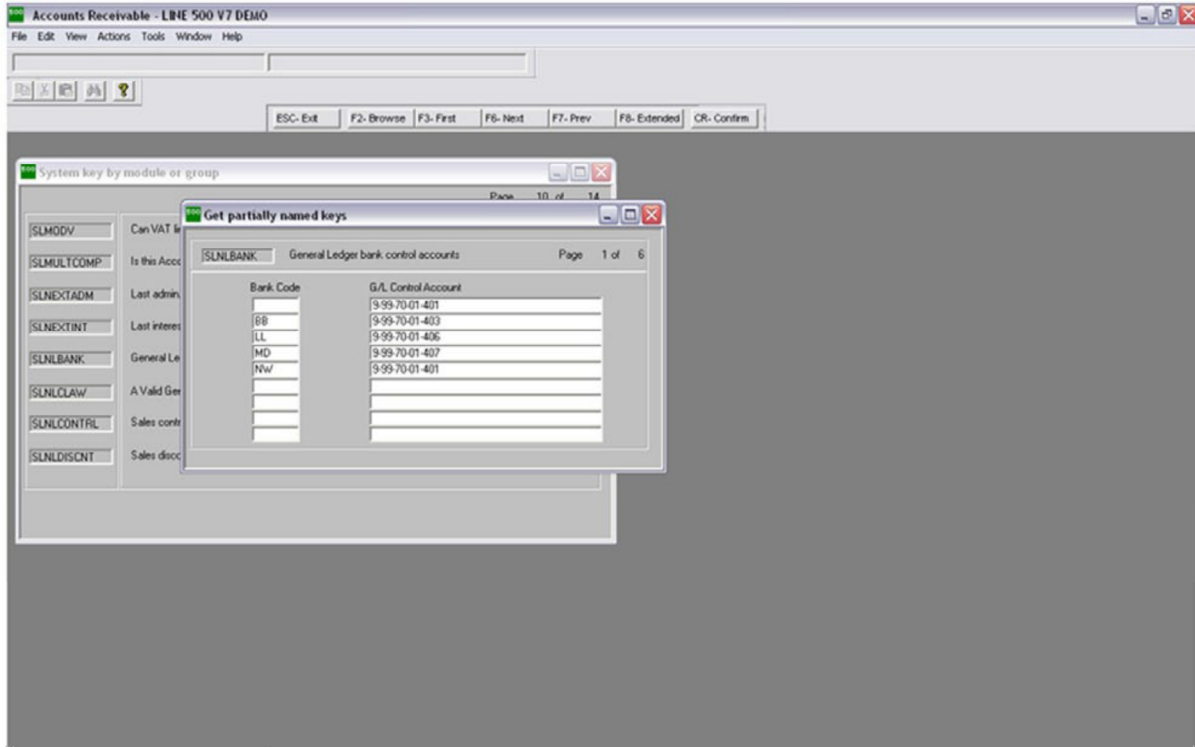


**System Keys**

CBBANK



SLNLBANK



PLNLBANK

